



IAWA Newsletter

2025 July

News

- Travail agricole et commercialisation en circuits courts
- Petites ou grandes, les exploitations agricoles sont confrontées à une pénurie de main-d'œuvre
- Temps de travail : 2 à 3 heures de moins par semaine pour les Nima
- Be your own Farm Safety Hero
- Michigan studies farmworkers - Vegetable Growers News
- Stay alert when operating farm vehicles
- Minister Healy-Rae announces the opening of the National Farm Safety Measure 2025
- Etre une femme en agriculture, s'affirmer et développer son projet
- Travail des enfants : une réalité persistante malgré les progrès réalisés !
- Robotique en agriculture : Entre révolution et évaluation - Chambre d'agriculture France
- The top 10 questions farmers ask about hiring farm employees
- Experimentation in buying decent work
- Dairy farmers urged to focus on work-life balance
- Un indicateur géographique de risque d'exposition aux pesticides
- Pesticides et santé des agriculteurs
- Des travailleurs agricoles du monde entier touchés par une mystérieuse insuffisance rénale - rts.ch - Santé
- Labour efficient and profitable – the Smyths' dairy-beef system
- Nouveautés de l'Association internationale d'ergonomie (IEA)
- Making dairy farms more attractive places to work

Congress

- Webinaire final du projet : venez découvrir les outils et références pour les Viandes en Circuits Courts
- Les Cuma face à la modification de la distribution des pluies : quelles ressources pour l'activité de travail agricole ?
- Sexta Circular del 17º Congreso ASET
- Webinaire "Nouvelles technologies et travail". Comment les transitions technologiques transforment le travail des agriculteurs et les acteurs du conseil ?
- The Future of Youth Jobs in Agrifood Systems in Africa
- Webinar - Farm Safety: Preventing tragedy on the farm
- [Replay] webinaire INOSYS Réseaux d'élevage Bovin Lait : Evolution des structures, travail et systèmes fourragers

Call for Papers

- Call for Working group - ISWA 2026
- The role of women in achieving food security and agricultural sustainability
- IFSA 2026 Montpellier - Call for papers is now open!
- 19èmes journées de Recherche en Sciences Sociales
- "Trabajo, género y reproducción social. Pasado y presente de los debates latinoamericanos sobre el trabajo y sus fronteras"
- Migrations et société : discours, représentations et enjeux
- AEASA CALL FOR PROPOSALS
- EASA - CALL FOR PAPERS DEADLINE EXTENDED (DUE DATE: 11 JULY 2025)

Publications

- Understanding the phases and tensions of regenerative agriculture for better health outcomes for farmers
- Effects of Interventions to Reduce Pesticide Exposure Among Farmers: Application of an Intervention Mapping Approach to Development
- Remuneration for Own Labour in Family-Run Dairy Farms Versus the Salaries and Wages in Non-Agricultural Sectors of the Economy—Evaluation of the Situation in Poland in 2005–2022
- Labor contractors in U.S. agriculture: Recent trends and H-2A program usage
- Temps de travail pour la transformation et la commercialisation en production laitière fermière
- California farmers are turning to nonfarm employers to fill lower wage seasonal jobs
- A practical approach to assess the resilience attributes of livestock farms
- Regulatory stress lowers farmer well-being as much as financial factors and exposure to extreme weather
- Perceptions of the Costs and Benefits of Farm Digitalisation in Europe
- Lifescapes of emotional labour in farming support organisations: An exploration using visual methods
- Le travail décent en agriculture au prisme de l'organisation familiale du travail et des modèles productifs en Afrique
- LGBTQ+ farmers' supportive relationships and mental health outcomes
- FINANCIAL AND ECONOMIC MANAGEMENT OF THE EFFICIENCY OF ENERGY CROP PRODUCTION IN THE SYSTEM OF SMART TECHNOLOGICAL DEVELOPMENT OF LABOR RESOURCES
- How does gender inequality in access to land ownership affect household agricultural production in Burkina Faso through the adoption of short- and long-term agricultural practices?
- Cultivating equality: The effect of traditional farming practices on gender disparity in China
- Everybody wants to make money from them: a qualitative study on labor exploitation and labor trafficking of farmworkers in Michigan
- Artificial intelligence development and rural labor employment quality
- Stage-Specific Effects of Extreme Temperatures on Rural Labour Reallocation in China
- Occupational health complaints and demographic features of farmers exposed to agrochemicals during agricultural activity
- Transnational labour governance in hazelnut value chain: farmers and seasonal migrant workers at the nexus of market and politics in Turkey
- Towards better tailored new entrant support in European agriculture: Analysing the differences between family successors and newcomers
- [Synthèse RT07] Temps de travail pour la transformation et la commercialisation en production laitière fermière
- Replication Data for "How Agri-Food Value Chain Employment and Compensation Evolve with Structural Transformation"
- Las encrucijadas del agronegocio: un estudio sobre los lugares de las mujeres en la división sexual del trabajo en el espacio rural de Saladillo
- Farmer-farmworkers: cross-border wage labor in northeastern Vietnam-southwestern China region
- Occupational hazards in agriculture – a severe case of lime sulphur-induced irritant contact dermatitis with characteristic skin manifestations
- Aging of agricultural labor and the adoption of improved crop varieties: A study based on rural China
- Women empowering rural Spain: A study of entrepreneurial career satisfaction

News



Travail agricole et commercialisation en circuits courts

Dans un article publié en juin 2025 dans Plos One, des chercheurs d'Inrae proposent une revue de littérature sur la question du travail des agriculteurs commercialisant en circuits courts. Les auteurs constatent d'abord que la... L'article Travail agricole et commercialisation en circuits courts est apparu en premier sur Blog de veille du Centre d'études et de prospective.



Petites ou grandes, les exploitations agricoles sont confrontées à une pénurie de main-d'œuvre

Face aux difficultés de recruter du personnel qualifié, de nombreuses exploitations agricoles suisses se tournent désormais vers des bénévoles pour tenir le coup durant la saison estivale.



Temps de travail : 2 à 3 heures de moins par semaine pour les Nima

Temps de travail : 2 à 3 heures de moins par semaine pour les Nima Près de 50 % des jeunes agriculteurs, sans aucune origine agricole, prennent plus de 10 jours de congés par an et ont au moins deux activités en dehors de la ferme, contre un tiers pour ceux qui sont issus de ce milieu. Le niveau de diplôme influe également, comme sur la gestion du temps en général.

Be your own Farm Safety Hero

Dr John McNamara, Teagasc Health and Safety Specialist, highlights the need for leadership in farm safety and encourages everyone involved in farming to become their own 'Farm Safety Hero', as part of Farm Safety Week 2025.



Michigan studies farmworkers - Vegetable Growers News

For the first time, the Mexican immigrant population in the U.S. has started to decline, creating new labor supply pressures for industries that rely on immigrant employees. In a Michigan State University (MSU) study, researchers provide an overview of the farm labor market in Michigan, emphasizing changes in employment, wages and farmworker characteristics to highlight how the farm labor force has changed over the past 20 yea...

Stay alert when operating farm vehicles

As part of Farm Safety Week, there is an emphasis on staying vigilant around farm vehicles. Francis Bligh, Teagasc Health and Safety Specialist, highlights the importance of understanding blind spots, maintaining clear communication, and managing vehicles to reduce the risk of injury.

Minister Healy-Rae announces the opening of the National Farm Safety Measure 2025

Minister of State at the Department of Agriculture, Food and the Marine with special responsibility for Forestry, Farm Safety and Horticulture, Michael Healy-Rae TD, today announced the reopening of the National Farm Safety Measure.



Etre une femme en agriculture, s'affirmer et développer son projet

VIVÉA Sud a eu le plaisir d'accueillir, le 24 juin dernier à Cocumont (47), une vingtaine d'agricultrices venues du Lot-et-Garonne. Cette journée a été un moment particulièrement riche en partages et en échanges autour d'une thématique centrale : comment une femme en agriculture peut s'affirmer, valoriser son travail et faire ses propres choix. Au programme [...] The post Etre une femme en agriculture, s'affirmer et développer son ...

Travail des enfants : une réalité persistante malgré les progrès réalisés !

En 2024, 138 millions d'enfants sont affectés par le travail des enfants. L'OIT et l'UNICEF appellent à renforcer la protection sociale, l'éducation de qualité et à lutter contre l'exploitation en agriculture, des mesures essentielles pour briser le cycle de la pauvreté et garantir un avenir meilleur à ces jeunes. Le travail des enfants en chiffres : 138 millions mineurs encore concernés Le dernier rapport conjoint de l'OIT et de l'UNICEF alerte sur une statistique préoccupante : en 2024, le travail des enfants concernait encore 138 millions ...



Robotique en agriculture : Entre révolution et évaluation - Chambre d'agriculture France

Le secteur agricole doit faire face depuis quelques années à de nouvelles innovations technologiques. Face à ces avancées, de nouveaux outils émergent, promettant de simplifier et d'optimiser le quotidien des agriculteurs. La robotique gagne ainsi beaucoup de terrain. Mais ces investissements sont-ils tous efficaces et rentables ? Une veille technologique est ainsi effectuée en toute indépendance par les Chambres d'agriculture, ...

The top 10 questions farmers ask about hiring farm employees

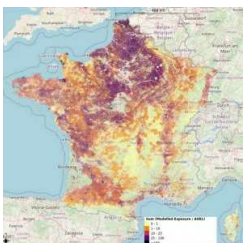
Starting off on the right foot is very important in terms of attracting and retaining employees, writes Teagasc Dairy Specialist, Martina Gormley. The first place to start is knowing your legal requirements as an employer and then ensuring you fulfil them.

Experimentation in buying decent work

The European Commission's current plans to revise the European Procurement Directives provide a valuable opportunity to review the progress made and the remaining challenges in making public procurement more socially sustainable. The 2014 revision of the Directives has supported EU member states in moving away from 'buying cheap' (lowest price purchasing practices) and towards 'buying decent work' (introducing safeguards to secure labour standards in publicly contracted firms). However,...

Dairy farmers urged to focus on work-life balance

Dairy farmers have been called upon to reflect on their work-life balance, as a recent study undertaken by Dublin City University (DCU) and Teagasc has pointed to considerable sleep and burnout issues.



Un indicateur géographique de risque d'exposition aux pesticides

Dans le numéro de mai 2025 de Nature Scientific Reports, des chercheurs du Joint Research Centre (JRC, voir un précédent portrait) publient un article sur l'élaboration d'un indicateur de risque d'exposition aux pesticides, pour la... L'article Un indicateur géographique de risque d'exposition aux pesticides est apparu en premier sur Blog de veille du Centre d'études et de prospective.



Pesticides et santé des agriculteurs

De plus en plus d'études démontrent que l'utilisation de pesticides par les agriculteurs accroît leur risque de développer certaines maladies. Pourtant, les conclusions de ces travaux sont souvent remises en cause dans le débat public.... L'article Pesticides et santé des agriculteurs est apparu en premier sur Blog de veille du Centre d'études et de prospective.



Des travailleurs agricoles du monde entier touchés par une mystérieuse insuffisance rénale - rts.ch - Santé

Coupeurs de canne à sucre au Nicaragua, riziculteurs en Thaïlande, ouvriers agricoles en Inde: partout dans le monde, des jeunes hommes sans antécédents médicaux contractent une mystérieuse maladie rénale. Les experts attribuent l'épidémie à la chaleur à laquelle ces hommes sont exposés pendant leur travail. L'OMS a réagi.

Labour efficient and profitable – the Smyths' dairy-beef system

Father and son team, Charles and Charlie Smyth run a progressive and commercially successful dairy calf to beef operation just outside Virginia, Co. Cavan. Participants in the Teagasc DairyBeef 500 Campaign, their system centres on maximising beef output from grass, consistently hitting key performance targets, and managing costs to ensure a healthy profit.



Nouveautés de l'Association internationale d'ergonomie (IEA)

Nous avons le plaisir de vous partager les activités récentes de l'IEA, l'association faîtière regroupant les sociétés d'ergonomie du monde entier. L'Organisation internationale du travail (OIT) a invité l'IEA à participer, comme organisation non-gouvernementale, à la 113e Conférence internationale du travail, en juin à Genève. Cette conférence annuelle réunit plus [...] Cet article Nouveautés de l'Association internationale d'ergonomie ...

Making dairy farms more attractive places to work

As less than 5% of dairy farmers are under 35, farmers attending the Moorepark Open Day, today, July 2 were reminded that the future of Irish dairying depends not just on productivity, but also on people.

Congress



Webinaire final du projet : venez découvrir les outils et références pour les Viandes en Circuits Courts

Mené entre 2022 et 2025, le projet VICTOR - Viandes en circuits courts, a permis de collecter des références du terrain sur les attentes en termes de qualité des produits carnés en vente directe, ainsi que sur les pratiques mises en œuvre par les éleveurs qui transforment à la ferme. Les 4 dimensions, technologie, hygiène, rentabilité et travail, ont été investiguées. Ce travail de collecte et d'analyse de données a permis de déterminer ...



Les Cuma face à la modification de la distribution des pluies : quelles ressources pour l'activité de travail agricole ?

Entre banque de travail et entraide agricole, les collectifs constitués autour du partage de matériels peuvent produire des ressources pour l'activité des agriculteurs et des agricultrices percutée par la modification de la distribution des pluies. À quelles conditions ? Quels types de ressources matérielles et immatérielles (mutualisation du risque, compétences, échanges de pratiques etc.) trouve-t-on dans ces collectifs ? Pour ...

Sexta Circular del 17° Congreso ASET

La Asociación Argentina de Especialistas en Estudios del Trabajo (ASET) tiene el agrado de anunciar que del 6 al 8 de agosto de 2025 tendrá lugar el 17° Congreso Nacional de Estudios del Trabajo. El mismo se desarrollará en la Facultad de Ciencias Económicas de la Universidad de Buenos Aires (UBA). En la 6ta Circular [...]



Webinaire "Nouvelles technologies et travail". Comment les transitions technologiques transforment le travail des agriculteurs et les acteurs du conseil ?

Le RMT travail en agriculture et INRAE proposent un webinaire "agriculture et numérique" qui s'appuie sur des résultats du projet Coeditag, conduit par INRAE, lequel a pour objectif de comprendre la coévolution entre les trajectoires de développement des Equipements et Technologies Numériques et la transformation des structures, les modèles et les organisations du secteur agricole. Les effets de court et long terme du numérique ...

The Future of Youth Jobs in Agrifood Systems in Africa

Replay on You Tube <https://www.youtube.com/watch?v=YgFthefSNA4>

Webinar - Farm Safety: Preventing tragedy on the farm

Health and Safety Authority (HSA) figures tell us that 17 children lost their lives due to farm related accidents between 2014-2023. Over 90% of cases involved a farm vehicle or machine. Through a recent Today's Farm article, Jacinta O'Neill shares some tips to prevent such accidents occurring.



[Replay] webinaire INOSYS Réseaux d'élevage Bovin Lait : Evolution des structures, travail et systèmes fourragers

Ce 2eme webinaire INOSYS Réseaux d'élevage Bovin Lait aborde 2 thèmes majeurs à partir d'analyses nationales et régionales. Le travail en élevage laitier : quels impacts de l'évolution des structures et lien avec les résultats économiques ? Les systèmes fourragers : quelles trajectoires d'évolution et impacts économiques ? Quelles alternatives au maïs ensilage ?

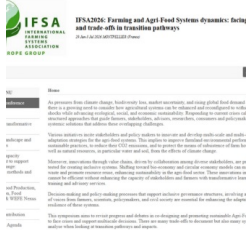
Call for Papers

Call for Working group - ISWA 2026

The call for working groups is open until 29 august 2025. Work in the agri-food sector is an increasingly complex topic. There are many intersecting challenges, such as ageing of the workforce, digitalisation, migration, impacts from a changing climate and integration of supply chains. The people working in the agri-food sector play a critical role in adapting and transforming work in the face of these challenges. Advancing the research agenda in this context is essential for informing responsible policy and practice relating to work in ...

The role of women in achieving food security and agricultural sustainability

BMC Agriculture is calling for submissions to our Collection focusing on The role of women in achieving food security and agricultural sustainability. This Collection invites research that explores the pivotal role of women in achieving food security and agricultural sustainability. We encourage submissions that address the challenges and opportunities for female farmers, the impact of gender equity on agricultural practices, and strategies to empower women in the agricultural sector. By highlighting these critical areas, we aim to promote ...



IFSA 2026 Montpellier - Call for papers is now open!

IFSA 2026 Montpellier - Call for papers is now open! We are delighted to announce that the call for papers for the 16th International Farming Systems Association Conference (IFSA-Europe group) is now open

19èmes journées de Recherche en Sciences Sociales

Date limite de réception des propositions : 15 septembre 2025 minuit heure de Paris Plateforme pour le dépôt de vos propositions : <https://cmt3.research.microsoft.com/JRSS2025> A des fins de bonne harmonisation, les auteurs sont invités à soumettre leur communication en se référant à la mise en forme fournie puis à les déposer en pdf Seules les propositions en français ou en anglais comprenant un papier intégral (non limité en nombre de pages), même provisoire, seront examinées. La décision du Comité scientifique pour chaque proposition ...

“Trabajo, género y reproducción social. Pasado y presente de los debates latinoamericanos sobre el trabajo y sus fronteras”

Desde el tránsito al siglo XXI, asistimos a una intensificación del debate político y especializado acerca de la reproducción de la vida, que pone en cuestión los límites entre el registro del trabajo y un espacio ideal de “no trabajo” (o exterior del trabajo). Fronteras que son desafiadas tanto por reivindicaciones identitarias y demandas de protección de diversos grupos sociales, como por estudios sobre aquellas formas de actividad que desbordan el “empleo típico” y tensionan los atributos que se desprenden del concepto de “actividad ...



Migrations et société : discours, représentations et enjeux

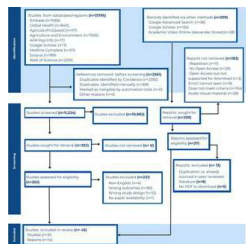
À l'occasion de la journée internationale des migrants qui a lieu chaque année le 18 décembre, ce colloque scientifique se donne pour objectif d'aborder la question des migrations à travers une approche pluridisciplinaire. Au cours de cette journée, les intervenants feront un état des lieux des enjeux, tant médiatiques que sociétaux, en s'intéressant notamment aux images, discours médiatiques et représentations des migrants dans ...

AEASA CALL FOR PROPOSALS



The following topics have been identified for workshops: ■ Policy, regulatory framework, international rulebased system and enforcement, ■ Competition for factors of production: Land, Labour, Capital and technology. ■ Industry structure, agricultural value chains and agribusiness. ■ Role of competit

Publications



Understanding the phases and tensions of regenerative agriculture for better health outcomes for farmers

Australian farmers face an array of challenges impacting mental health, such as extreme climatic events, market uncertainties, technological dependence, regulatory demands, and social isolation. Regenerative agriculture (RA) has been suggested as a way for farmers to improve wellbeing by integrating natural systems, continuous evaluation, and adaptation—while benefitting from the socio-cultural aspects of farmer relations—for s...

Effects of Interventions to Reduce Pesticide Exposure Among Farmers: Application of an Intervention Mapping Approach to Development

Considering the intricate complexity of pesticide management, we applied the intervention mapping approach to develop, implement, and evaluate two interventions aimed at improving protective behaviors and the use of personal protective equipment (PPE), thereby reducing pesticide exposure among farmers. Methods We used the steps of the Intervention Mapping (IM) process. First, a needs assessment was conducted, including a case study and a cross-sectional survey. Subsequently, the program outcomes and change objectives were specified. This ...



Remuneration for Own Labour in Family-Run Dairy Farms Versus the Salaries and Wages in Non-Agricultural Sectors of the Economy— Evaluation of the Situation in Poland in 2005–2022

Income level is a key indicator of the standard of living and the economic efficiency of undertaken activities. This paper aims to evaluate the earnings of Polish dairy farmers compared to those in other economic sectors between 2005 and 2022. The analysis covered 1688 family-run farms that participated continuously in the FADN system throughout the study period, with particular emphasis on farms that expanded their dairy cow herds. ...

Labor contractors in U.S. agriculture: Recent trends and H-2A program usage

This paper analyzes 20 years of data on employment trends and characteristics of U.S. farm labor contractors (FLCs). FLCs are primarily concentrated in specific industries and regions, particularly i...

Temps de travail pour la transformation et la commercialisation en production laitière fermière

La vente en circuits courts en productions laitières correspond souvent à de la transformation fromagère et la vente à la ferme, en tournées ou sur des marchés. Cette activité qui permet une meilleure valorisation des produits nécessite cependant un temps de travail supplémentaire important. Afin de donner des repères aux éleveurs en place ou à ceux qui envisagent de se lancer dans cette activité, les membres du Réseau Thématique ont analysé les temps de travail chez les éleveurs qui pratiquent la transformation et vente en circuits courts. Si ...



California farmers are turning to nonfarm employers to fill lower wage seasonal jobs

California's agricultural employers hired an average 414,000 workers between 2018 and 2023 and reported an average 886,000 unique farmworkers each year, a ratio of 2.1 workers for each average or full-time equivalent (FTE) job. The ratio of two workers for each FTE job is stable, but a rising share of workers are brought to farms by nonfarm crop support firms, including farm labor contractors (FLCs). Farmers outsource seasonal ...



A practical approach to assess the resilience attributes of livestock farms

There is a growing interest in studying farm resilience. Typically, resilience assessments focus on crisis outcomes, with less attention paid to assess the system characteristics that contribute to building resilience, i.e. resilience attributes. This is partly due to a lack of practical approaches to assess these attributes. The objective of this paper is to develop a practical approach to assess and compare the status of livestock ...

Regulatory stress lowers farmer well-being as much as financial factors and exposure to extreme weather

Recent evidence suggests that farmers face high levels of stress, depression, and anxiety, which have been associated with lower well-being and life satisfaction outcomes. While factors such as finances, climate, demographics, and social issues have been linked to these outcomes and associated interventions, little research has focused on the relationship between government regulations and their implementation with stress, especially beyond single farm types. To address this gap, we utilize survey data from more than 3400 commercial farmers, ...

Perceptions of the Costs and Benefits of Farm Digitalisation in Europe

Farm digitalisation is revolutionising European agriculture, offering enhanced productivity, resource efficiency and sustainability. Technologies like sensors, robotics and data-driven tools enable precise decision-making thereby reducing time and resource use. This article draws on insights from 18 focus groups in European living labs, engaging farmers, policymakers and advisors to explore the trade-offs of digital adoption. Key benefits include time-saving tools that streamline operations, promote sustainability and support innovative ...

Lifescapes of emotional labour in farming support organisations: An exploration using visual methods

Recent studies of emotional wellbeing and resilience within farming communities have sought to identify the 'landscape of support' (Shortland et al., 2023) on which farmers rely in times of crisis. This landscape is comprised largely of government organisations, and farming support organisations within the voluntary and charity sector, often relying on volunteers to provide and promote services to farmers. Understanding this landscape is central to the ability to target and direct appropriate support to farmers experiencing financial, ...



Le travail décent en agriculture au prisme de l'organisation familiale du travail et des modèles productifs en Afrique

La notion de travail décent, qui figure dans le huitième objectif de développement durable (ODD) des Nations unies, doit prendre en considération les spécificités de l'organisation du travail agricole qui est majoritairement familial en Afrique, comme dans de nombreuses géographies. Tout changement de modèle de production induit des changements dans la division du travail et le volume des tâches. Il doit donc être évalué au regard ...

LGBTQ+ farmers' supportive relationships and mental health outcomes

Social support is a crucial protective factor for mental health, including for farmers. Farmers' social support has been associated with greater psychological well-being and reduced distress. However, little research has focused on lesbian, gay, bisexual, transgender, and/or queer (LGBTQ+) farmers and few studies have examined the role of social support for LGBTQ+ farmer mental health. The current study presents findings from analysis of survey data (N=148) and semi-structured interview data (N=17) to better understand United States (U.S.) ...

FINANCIAL AND ECONOMIC MANAGEMENT OF THE EFFICIENCY OF ENERGY CROP PRODUCTION IN THE SYSTEM OF SMART TECHNOLOGICAL DEVELOPMENT OF LABOR RESOURCES

The article presents the author's concept of integrated financial and economic management of energy crop production using the example of growing fireweed in the forest-steppe zone of Ukraine. The study is based on comprehensive monitoring of the agro-technological cycle, the dynamics of biomass indicators, economic feasibility and energy efficiency in the context of innovation challenges. For the first time, the feasibility of combining adaptive agricultural technologies with elements of smart analysis of labor and material resource productivity has been substantiated, which allows not only to increase yield, but also to optimize costs at all stages of the production process. The results demonstrate that the most effective is the spring sowing strategy, which provides the highest level of profitability and the greatest energy profit. The proposed network model allows structuring technological operations in the form of a logistical sequence taking into account calendar periods and resource provision, which is key for planning the load on personnel. The author's methodology for assessing energy efficiency shows that the energy efficiency coefficient indicates an average level of technological feasibility of the selected model. Thus, the presented system is a unique multidimensional platform for managing energy agricultural production, which can be integrated into strategies for sustainable development of rural areas through the prism of technological transformation of labor resources.



How does gender inequality in access to land ownership affect household agricultural production in Burkina Faso through the adoption of short- and long-term agricultural practices?

This article uses panel data from 2014 to 2019 for a sample of 2,263 households in Burkina Faso. It aims to identify the impact of gender inequality in access to land ownership on agricultural prod...



Cultivating equality: The effect of traditional farming practices on gender disparity in China

This study explores the impact of labor demand in traditional farming on contemporary gender equality in China. We hypothesize that regions characteri...



Everybody wants to make money from them: a qualitative study on labor exploitation and labor trafficking of farmworkers in Michigan

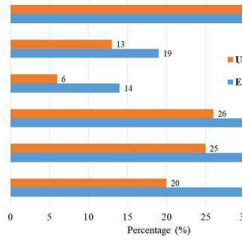
Introduction Fair work conditions are essential for promoting health among workers, communities, and society. Yet, historically farmworkers have been impacted by precarious and exploitative work conditions. Given the scarce research in Michigan with farmworkers, in 2019 we developed the Michigan Farmworker Project (MFP), guided by community-based participatory principles and in partnership with state and local organizations. This ...

Artificial intelligence development and rural labor employment quality

This paper aims to explore the impact of artificial intelligence (AI) development on the employment quality of rural labor and its underlying mechanisms...

Stage-Specific Effects of Extreme Temperatures on Rural Labour Reallocation in China

Mitigating agricultural losses caused by extreme temperatures presents a global challenge. Using household-level data on corn farmers in northern China from 2009 to 2017, this paper examines how farm...



Occupational health complaints and demographic features of farmers exposed to agrochemicals during agricultural activity

Background This cross-sectional study evaluates occupational health hazards among farmers' exposure to pesticides in Chikkaballapura, Karnataka, India, focusing on health complaints, demographic factors, occupational history and pesticide-handling practices. **Methods** A total of 226 participants were recruited, comprising 109 exposed farmers and 117 unexposed controls matched by age and gender. Structured questionnaires addressing demographics, and lifestyle characteristics, pesticide application practices, management procedures, and health complaints were used to gather data. **Results** Significant demographic disparities emerged, with a higher prevalence of younger individuals (≤ 30 years) in the exposed group (32%) than in the unexposed (18%, $p = 0.002$). Education levels also differed: 12% of exposed farmers had postgraduate education compared to 3% of the unexposed group ($p = 0.009$). Dietary practices and lifestyle characteristics like chewing tobacco, drinking alcohol, and smoking did not significantly differ between groups. Occupational practices revealed critical safety gaps. The use of personal protective equipment (PPE) was limited, with only 27% of exposed farmers reporting the use of masks, 20% wearing goggles, and 15% using gloves. Many exposed farmers engaged in high-risk tasks, including pesticide mixing (62%) and weekly pesticide applications (52%), often without the use of PPE. Health complaints were significantly more common in the exposed group: 35% reported fatigue (compared to 20% in controls, $\chi^2 = 5.51$, $p =$

Transnational labour governance in hazelnut value chain: farmers and seasonal migrant workers at the nexus of market and politics in Turkey

This article combines insights from two emerging literatures on transnational private regulation: the grounding perspective and politics and power in global ...

Towards better tailored new entrant support in European agriculture: Analysing the differences between family successors and newcomers

Publication date: October 2025 Source: Journal of Rural Studies, Volume 119 Author(s): Simon Stork, Wolf Lorleberg, Bernd Pölling, Xiaohua Yu, Jan-Henning Feil



[Synthèse RT07] Temps de travail pour la transformation et la commercialisation en production laitière fermière

La vente en circuits courts en productions laitières correspond souvent à de la transformation fromagère et la vente à la ferme, en tournées ou sur des marchés. Cette activité qui permet une meilleure valorisation des produits nécessite cependant un temps de travail supplémentaire important. Afin de donner des repères aux éleveurs en place ou à ceux qui envisagent de se lancer dans cette activité, les membres du Réseau Thématique ...

Replication Data for "How Agri-Food Value Chain Employment and Compensation Evolve with Structural Transformation"

This dataset contains replication materials for the results presented in the article "How Agri-Food Value Chain Employment and Compensation Evolve with Structural Transformation." It includes instructions, raw data (excluding proprietary components), and code used to reproduce the data consolidation process and estimation results. The analysis relies on raw Eora Multi-Region Input-Output (MRIO) data, which are [...] Source: IFPRI Ethiopia: Ethiopia Strategy Support Program



Las encrucijadas del agronegocio: un estudio sobre los lugares de las mujeres en la división sexual del trabajo en el espacio rural de Saladillo

La tesis doctoral "Las encrucijadas del agronegocio: un estudio sobre los lugares de las mujeres en la división sexual del trabajo en el espacio rural de Saladillo" analiza los lugares que ocupan las mujeres en el marco del modelo de agronegocio en la ruralidad bonaerense. Desde una perspectiva multiescalar con enfoque de género, la investigación articula herramientas de la sociología y la geografía para comprender cómo las tra...

Farmer-farmworkers: cross-border wage labor in northeastern Vietnam-southwestern China region

The paper contributes to scholarship on family farm, social reproduction, and labor migration theories. It argues that the emergence of wage labor within the family farm labor structure - and its transformation across time, place, and space - has shifted the traditional spaces where production and social reproduction functions typically occur. This shift is enabled by a self-exploitation mechanism internal to the family farm. When situated at the national border in the context of cross-border wage work, multiple fears associated with the ...



Occupational hazards in agriculture – a severe case of lime sulphur-induced irritant contact dermatitis with characteristic skin manifestations

Lee E, Kale A, Gaspari AA. Toll-Like Receptors and Contact Dermatitis. *Dermatitis*. 2025;36(1):14–27. CrossRef Google Scholar Yin L, Ungar B, Guttman-Yassky E, et al. Beyond Avoidance: Advanced Therapies for Contact Dermatitis. *J Allergy Clin Immunol Pract*. 2024;12(9):2260–2267. CrossRef Google ...

Aging of agricultural labor and the adoption of improved crop varieties: A study based on rural China

Publication date: October 2025 Source: *Journal of Rural Studies*, Volume 119 Author(s): Hui Mao, Meitong Liu, Heyan Tang, Yong Fu

Women empowering rural Spain: A study of entrepreneurial career satisfaction

Publication date: October 2025 Source: Journal of Rural Studies, Volume 119 Author(s): Manuel Morales Valero, Sergio Moldes-Anaya, Diana Amber Montes, Cristina Cruz González

www.workinagriculture.com